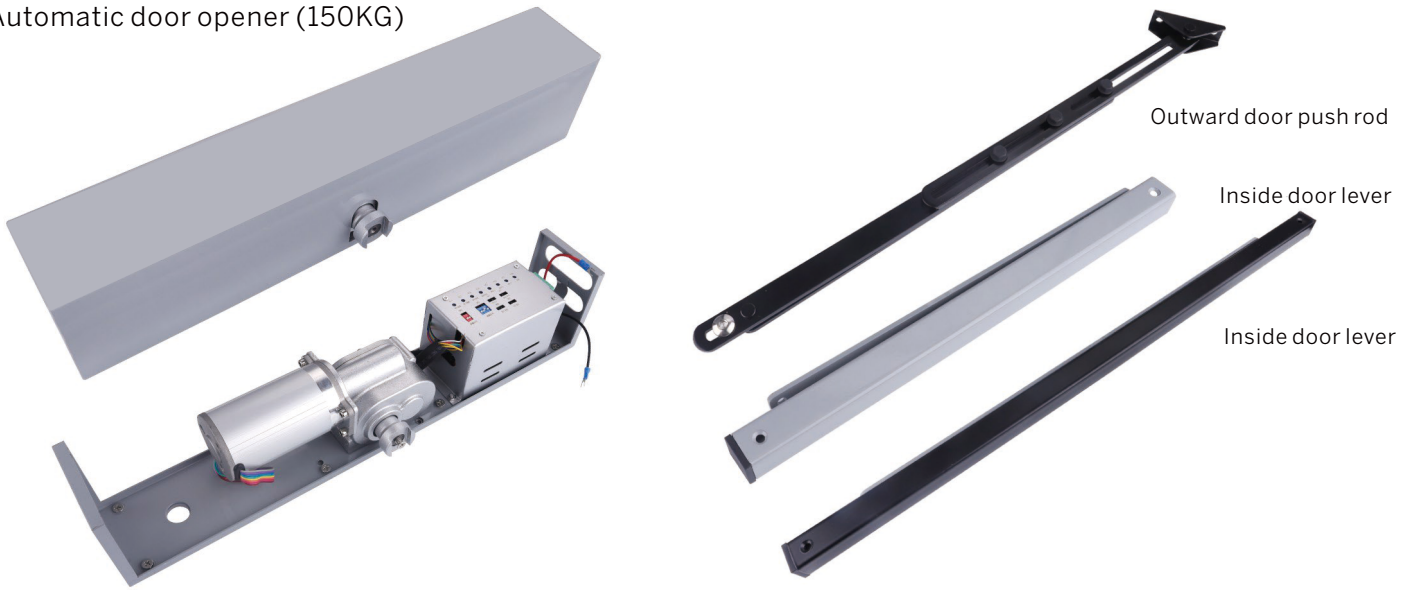


ED200

Automatic door opener (150KG)



Product features

- A. Adopting encoder brushless motor worm gear technology, ultra-quiet operation
- B. Multi-function interface, full-featured remote control technology with double-door interlocking, position feedback and other functions
- C. Push-to- open function, safety protection function for closing the door in reverse direction
- D. It can be used with manual remote control, sensors, buttons, access control, etc
- E. The opening force and closing check setting of the door can be adjusted to better adapt to the weight and position of the door
- F. Its ultra-quiet operation mode is especially suitable for noise-sensitive occasions (operating room doors, hospital access doors, The doors of senior consulting rooms, public offices, secret institutions, business hotels, senior apartments, leaders' offices, and so on.
- G. Can be used as fire linkage control for normally open or normally closed door, with fire feedback signal

Performance parameter table

Applicable swing doors	Swing door of various materials	Alarm in case of obstacle	Have
Door width	1200mm	Intelligent overheat protection	Have
Door weight	150kg	Closing buffer function	Have
Automatic opening Angle	90° - 150°/s	Control electric lock function	adjustable
Turn on hold time	1~30 seconds/s	Door lock force adjustment function	Have
Opening speed	3~6 seconds/s Adjustable	Door opening buffer function	Have
closing speed	3~6 seconds/s Adjustable	power supply	Ac110-220V
Automatic overload protection	No	Input power Static/Maximum	65W
Intelligent obstacle protection	Have	Main engine dimensions	450X85X100mm
Remote control function	Full-featured password remote control		
Work program	Door opening signal → Control unlocking → open door → brake to stop the door → open door hold → buffer → lock door		

